

Brass Warm-Up Routine

Compiled by George Palton

Trumpet
TC Euph

#1



7



15



#2

22



30



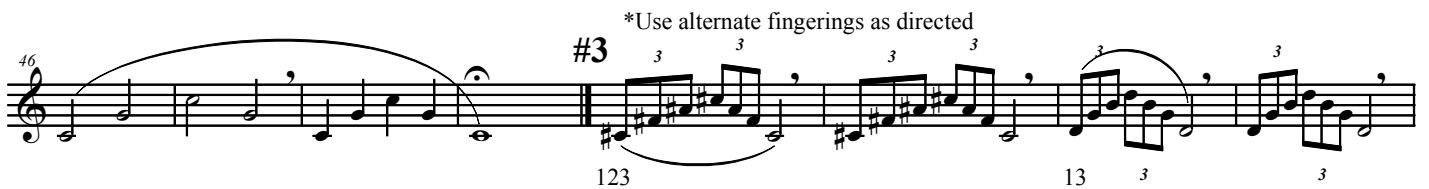
38



*Use alternate fingerings as directed

#3

46



54



#4

60

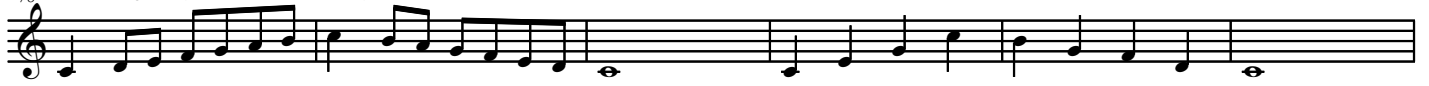


68



2
78 **C Major (B Flat Concert)**

Brass Warm-Up Routine



92 **F Major (E Flat Concert)**



G Major (F Concert)



B Flat Major (A Flat Concert)



D Major (C Concert)



A Major (G Concert)



162 **E Major (D Concert)**

Musical staff for E Major (D Concert) starting at measure 162. The key signature has three sharps (F#, C#, G#). The melody consists of eighth and quarter notes.

168

Musical staff for E Major (D Concert) starting at measure 168. The melody continues with eighth and quarter notes.

176 **E Flat Major (D Flat Concert)**

Musical staff for E Flat Major (D Flat Concert) starting at measure 176. The key signature has two sharps (F#, C#) and one flat (Bb).

182

Musical staff for E Flat Major (D Flat Concert) starting at measure 182. The melody continues with eighth and quarter notes.

190 **A Flat (G Flat Concert)**

Musical staff for A Flat (G Flat Concert) starting at measure 190. The key signature has two flats (Bb, Eb). The melody features eighth and quarter notes.

196

Musical staff for A Flat (G Flat Concert) starting at measure 196. The melody continues with eighth and quarter notes.

204 **B Major (A Concert)**

Musical staff for B Major (A Concert) starting at measure 204. The key signature has four sharps (F#, C#, G#, D#).

210

Musical staff for B Major (A Concert) starting at measure 210. The melody continues with eighth and quarter notes.

G Flat Major (E Concert)

218

Musical staff for G Flat Major (E Concert) starting at measure 218. The key signature has two flats (Bb, Eb). The melody features eighth and quarter notes.

224

Musical staff for G Flat Major (E Concert) starting at measure 224. The melody continues with eighth and quarter notes.

D Flat Major (B Concert)

232

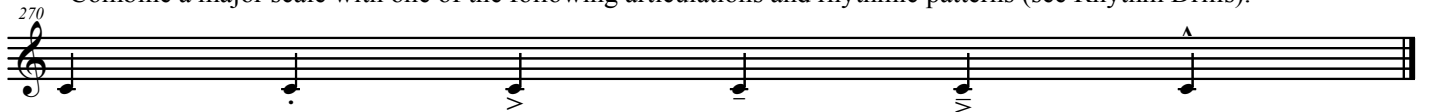
Musical staff for D Flat Major (B Concert) starting at measure 232. The key signature has three flats (Bb, Eb, Ab).

238

Musical staff for D Flat Major (B Concert) starting at measure 238. The melody continues with eighth and quarter notes.

C Chromatic (1 Octave)**F Chromatic (1 Octave)****G Chromatic (2 Octaves)****C Chromatic (2 Octaves)****Scale and Rhythm Drills:**

Combine a major scale with one of the following articulations and rhythmic patterns (see Rhythm Drills).



Rhythm Drills

1 2 3 4 5 6

7 8 9 10 11 12

13 14 15 16 17 18

19 20 21 22 23 24

25 26 27 28 29 30

31 32 33 34 35 36

37 38 39 40 41 42

43 44 45 46 47 48

49 50 51 52 53 54

55 56 57 58 59 60

61 62 63 64 65 66

67 68 69 70 71 72

73 74 75 76 77 78

Rhythm Drills

79 80 81 82 83 84

85 86 87 88 89 90

91 92 93 94 95 96

97 98 99 100 101 102

103 104 105 106 107 108

109 110 111 112 113 114

115 116 117 118 119 120

121 122 123 124 125 126

127 128 129 130 131 132

133 134 135 136 137 138

139 140 141 142 143 144

145 146 147 148 149 150

151 152 153 154 155 156